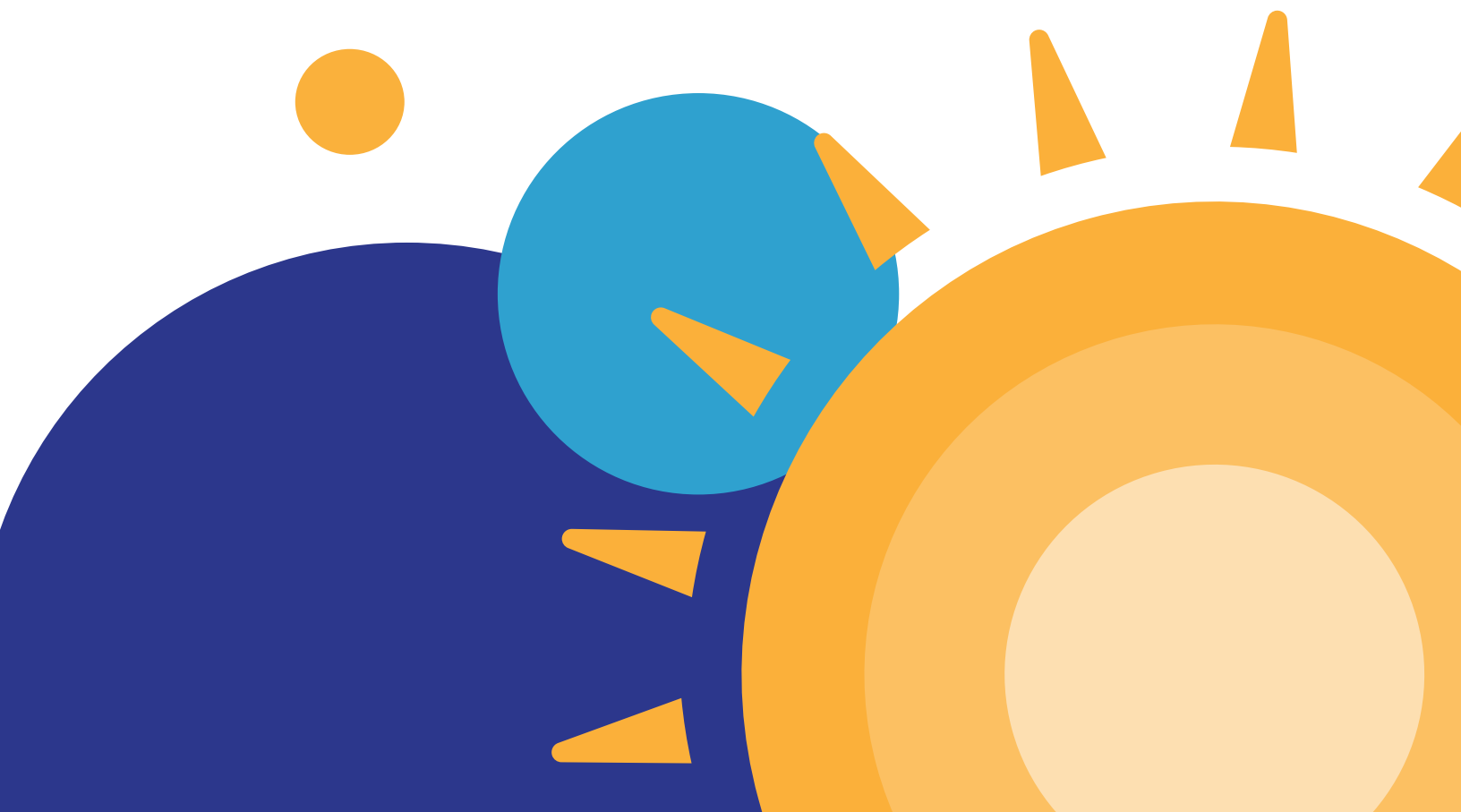




In-Depth Guide to Adult Home Care for Families

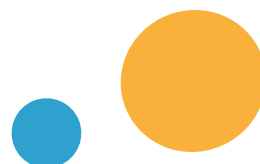




When caring for aging loved ones or those with special abilities, you naturally want to provide the best support possible. However, balancing work, family responsibilities and the demands of caregiving can be challenging. Stress and burnout are common among caregivers, making it difficult to provide the level of care your loved ones deserve.

At Active Day, we understand these challenges. Our comprehensive adult home care services are designed to alleviate the responsibilities on your shoulders while ensuring your loved ones receive high-quality, compassionate care in the comfort of their home. By partnering with a trusted provider like Active Day, your loved ones receive the attention and care they need.

Choosing the proper care for your loved one is critical as you embark on the journey of beginning adult home care. It involves assessing various options, understanding the specific needs of the individual, and finding a service that offers both emotional and physical support. In this in-depth guide, we'll walk you through everything you need to know about adult home care so you can make the best choice possible for your family.





What is Adult Home Care?

Adult home care can support individuals at different stages of their lives for aging seniors and adults with special abilities. The primary goal is to help them maintain their dignity, independence, and quality of life while providing the appropriate level of care.

Adult Home Care vs. Other Care Services

Adult home care is quite different from other forms of care, such as nursing homes, assisted living facilities, or long-term care (LTC) services.

While nursing homes and assisted living facilities offer a more structured environment with 24/7 supervision, adult home care allows your loved one to receive professional support without leaving home. Receiving care at home can be particularly beneficial for those who prefer to maintain their independence or who find comfort in familiarity with their surroundings.

Adult home care also offers more flexibility than similar adult day care programs, which take place outside the home at a specialized facility. While adult day care provides social interaction and medical supervision during specific hours, home care services offer a more flexible schedule that can fit into your loved one's daily routine.

All kinds of adult care can be beneficial. What's important is choosing the right option for your loved one.





Who Benefits from Adult Home Care?

Adult home care is available for adults ages 21 and up and is ideal for seniors and adults of varying mobility levels and cognitive abilities. The individuals who benefit most from these services include:



Seniors

Many seniors prefer to age in place and maintain their independence. Adult home care allows them to do this while receiving the care they need.



Mobility

Our services can accommodate most mobility levels, whether your loved one requires minimal assistance or is wholly dependent on caregivers for mobility.



Cognitive Ability

In-home services aim to provide the appropriate support for different levels of cognitive ability, including mild cognitive impairment or more advanced stages of dementia.





The Benefits of Adult Home Care

Home care services offer several benefits for individuals who need them. Taking an in-home approach has a significant positive impact on both individuals and their families.

Maintaining Independence and Dignity

As caregivers, our primary goal is to allow your loved one to maintain their dignity and as much independence as possible. By receiving care at home, they can continue living in a comfortable environment, surrounded by personal belongings and memories.

Personalized Service Plans

Adult home care services are highly customizable. At Active Day, we develop service plans based on your loved one's specific needs, routine, preferences, and medical requirements.

Emotional and Social Support

Isolation and loneliness can be major concerns for those who are homebound or have limited mobility. Our home care services provide your loved one with regular social interactions and emotional support, which can greatly enhance their quality of life.

Convenience

In-home care services offer unparalleled convenience for your loved one and your family. Care is delivered directly to the home, eliminating the need for transportation to and from a facility. The convenience of in-home care is particularly beneficial for those with mobility issues or health conditions that make travel challenging or for caregivers with an already busy schedule.

Flexibility

Adult home care services are flexible by design. You can choose the level and frequency of care that best suits your needs, whether that's a few hours or a consistent routine schedule. This flexibility allows you to adjust the care plan as your loved one's needs evolve over time.





How to Choose the Right Adult Care Provider

Choosing the right adult care provider is about balancing professional care and a compassionate approach that respects your loved one's dignity. Consider the provider's qualifications, approach to personalized care, reputation, and how well their services match your loved one's needs.

Quality of Care and Staff Expertise

When evaluating adult home care providers, the quality of care and the expertise of the staff are paramount. Look for providers like Active Day, that emphasize person-centered services and highly qualified and trained compassionate caregivers who have gone through extensive background checks.

Personalized Service Plans

Your in-home care provider should offer individualized service plans tailored to your loved one's unique needs. We're committed to customizing service plans to ensure that each client receives the right level of support and attention. Needs change over time, their care plan should be adjusted accordingly. We provide flexible and adaptable services that can be modified to accommodate evolving needs, ensuring continuity of care.

Caregiver Training and Certifications

The staff should be qualified to handle medical emergencies and be well-versed in caring for individuals with specific needs, such as mobility impairments or cognitive decline. Active Day team members nationwide are trained and qualified to provide the care your loved one deserves.

Emergency and Medical Response Plans

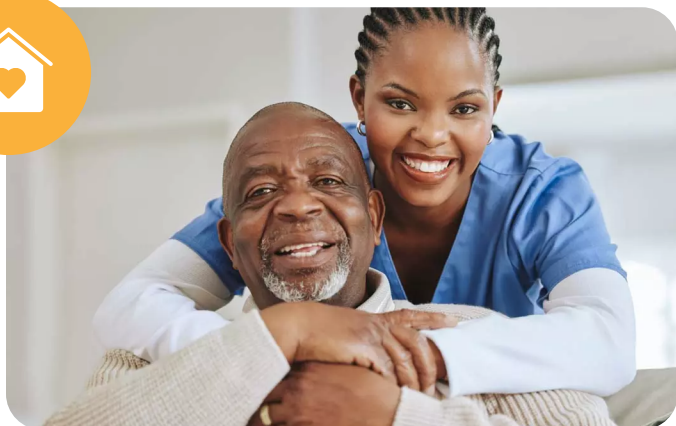
A solid emergency and medical response plan is crucial when caring for seniors or other adults with special abilities. For your piece of mind and your loved one's safety, Active Day has robust protocols in place to ensure the safety and well-being of our clients.





Services Offered by Active Day

At Active Day, we offer a variety of services for seniors and adults with special abilities, including personalized home care solutions. We focus on improving quality of life by customizing services to meet each person's unique needs.



In-Home Care

We provide specialized in-home care for adults who need it. Services include personal care, companionship, and assistance with activities of daily living (ADLs).



Medical Support

Our qualified professionals provide medication reminders to ensure your loved ones receive proper medical support in the comfort of home.



Transportation

We accommodate ambulatory and non-ambulatory individuals through our services or a local transportation provider as part of our comprehensive care package.



Find Your Nearest Active Day Adult Home Care Provider

Personalized care is essential for seniors and adults with special abilities. By choosing a trusted provider like Active Day, you can feel confident that your loved one is in good hands. Our care team provides support with medication, mobility, incontinence, and diet management, ensuring that each client's needs are met with dignity and respect.

To take the next step, speak to an **Active Day Support Coordinator** who can help determine which services are best suited for your unique situation. Our in-home care services are available to adults 18 years and older.

Find a Location near you to begin the journey toward quality care and support for your loved one.

